



Wood Deck Waterproofing

Featuring AMP-100™

Project:

Wood Deck
The Cooper House

Location:

Seattle, WA

Owner:

Private Real Estate
Investment Company

Applicator:

Vector Construction

System:

AMP-100™
Aliphatic Modified Polyurea

Total Area:

250 Square Feet

Completion Date:

January 2009

PROBLEM:

The Cooper House, a Seattle landmark, was restored, transforming an early 1900's Neoclassical style duplex into a 21st Century commercial building. The owner needed a durable, waterproof coating that would provide the wood deck with daily protection from the elements. It was necessary for the coating to have a fast cure time to allow for uninterrupted restoration of the building.

SOLUTION:

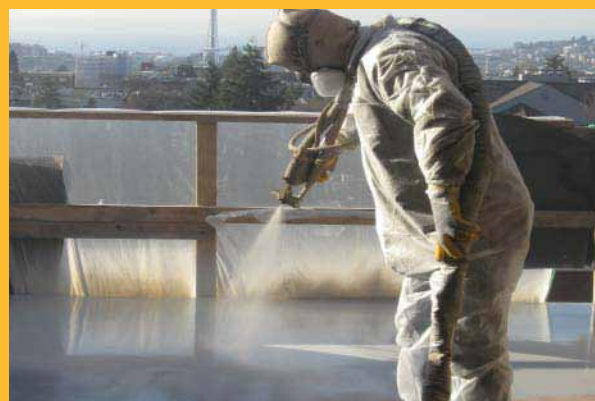
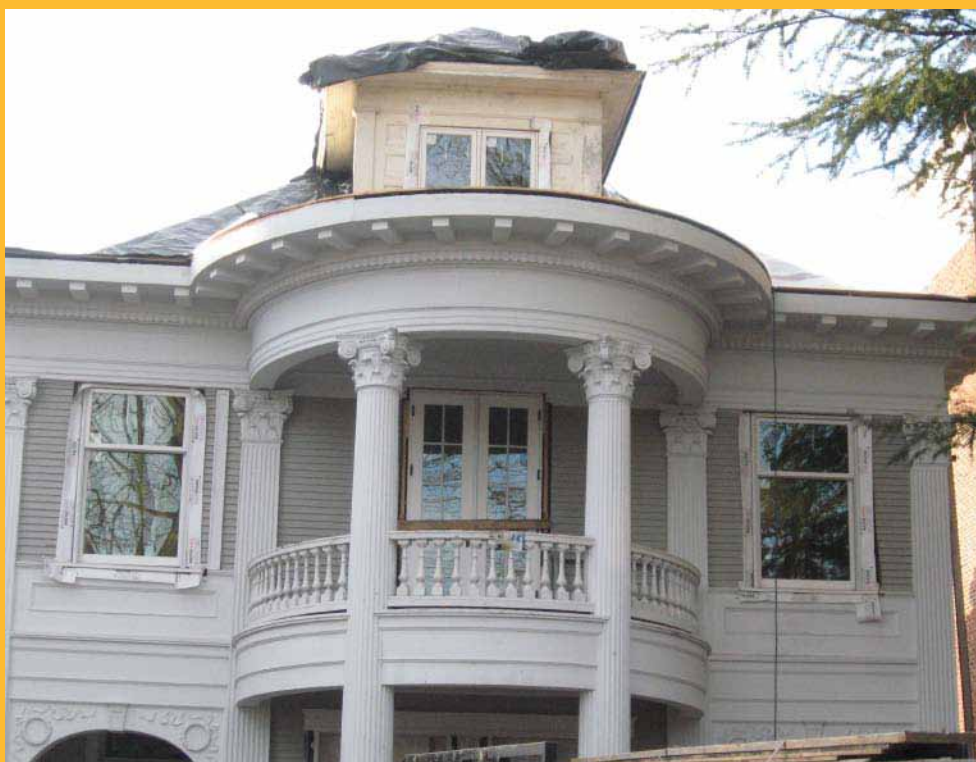
SPI's AMP-100™ Polyurea was chosen because of the coating's good color-retention, rapid curing, and abrasion resistant properties. AMP-100™ has a unique synergy of aliphatic and aromatic polymer based chemistry that provides an

economical, U.V. resistant, coating alternative to pure aliphatic protective coatings.

The clean and dry wood deck surface was coated with a primer. Then the deck was coated with AMP-100™ Polyurea at 80-100 mils. Finally, using a special technique, the applicator created a textured finish, leaving the owners with a waterproof, non-skid deck surface.

RESULTS:

The applicator was able to finish the project on schedule despite weather challenges. The Cooper House deck is now protected with a durable, aesthetically pleasing coating that will last for many years. Now building occupants and visitors are able to continue enjoying a part of Seattle's history and a great downtown view.



SPECIALTY PRODUCTS, INC. - 2410 104th St. Ct. S. Suite D, Lakewood, WA 98499

(800) 627-0773 or (253) 588-7101 Fax (253) 588-7196

Email: info@specialty-products.com - www.specialty-products.com



Wooden Deck Surface Protection

Featuring Polyshield HT™

Project:

Residential Home
Wood Decking & Sheer Walls

Location:

Beverly Hills, CA

Contractor:

Poly Coatings, Inc.

System:

POLYSHIELD HT™

Total Area:

2,500 square feet

Completion Date:

2008

PROBLEM:

A residential contractor in Beverly Hills, CA needed a strong, water resistant, elastomeric coating system to protect wooden decks and sheer walls from insect damage. The home previously had Chromate Copper Arsenate (CCA) being used as a protective coating, but the U.S. Environmental Protection Agency restricted the use of CCA in 2004.

The general contractor considered several other methods including hot mopping and torch down membrane systems. However, these methods were not efficient due to the heating and cooling they would require. The rapid temperature change causes the substrate to crack and pull away from the metal

flashings. This would create leaks throughout the floor surface.

SOLUTION:

Polyshield HT™ was the best choice because of its high tensile strength and elongation properties. It could withstand surface expansion and contraction caused by freeze-thaw cycles. It also has an excellent Permeance (perm) rating for water containment. Polyshield HT™ is 100% solids, contains no VOCs, and is safe for use in residential and commercial properties.

RESULTS:

The general contractor said he will continue to use Polyshield HT™ on all of his custom home jobs where water control is needed.



SPECIALTY PRODUCTS, INC. - 2410 104th St. Ct. S. Suite D, Lakewood, WA 98499

(800) 627-0773 or (253) 588-7101 Fax (253) 588-7196

Email: info@specialty-products.com - www.specialty-products.com



Sanitary, Cleanable Coating

Featuring Polyshield SS-100®

Project:

Milk Parlor Floors

Owner:

Carpenter Ranch

Applicator:

Matheson Painting

System:

100 mils POLYSHIELD SS-100®

Total Area:

40,000 square feet

Completion Date:

February 1999

PROBLEM:

The dairy farm's milking parlor uses both galvanized and stainless steel in the facility. The steel was unprotected and difficult to clean. The project consisted of 40,000 sq. ft. of floors, walls, ceilings, crowd gates, posts, and rails that needed to be coated for easy wash down.

SOLUTION:

Polyshield SS-100® polyurea was specifically chosen for its easy cleaning and sanitation properties. The floor areas were cleaned, primed with SPI Primer, and coated with 100 mils of Polyshield SS-100®. Then, an aggregate was broadcast into the basecoat, followed by a 30-mil topcoat to lock it in. This step was necessary in order to create a non-skid coating surface.

RESULTS:

The owner of the dairy loves the easy clean up of Polyshield SS-100®. He was so impressed, he decided to coat swather heads, flag poles, corral gates, empty electric wire spools for hanging hoses, and other equipment.

June 1999: The product was performing well. There were no visible signs of lost adhesion, pinholes, or cracks. Some discoloration has occurred due to the dairy's sterilization chemicals.

April 2002: Due to the seamless surface, the milk parlor is now easily maintained. What used to take the health inspector two days to fully inspect, now takes 45 minutes. Everyone is very pleased with the outcome.



SPECIALTY PRODUCTS, INC. - 2410 104th St. Ct. S. Suite D, Lakewood, WA 98499

(800) 627-0773 or (253) 588-7101 Fax (253) 588-7196

Email: info@specialty-products.com - www.specialty-products.com